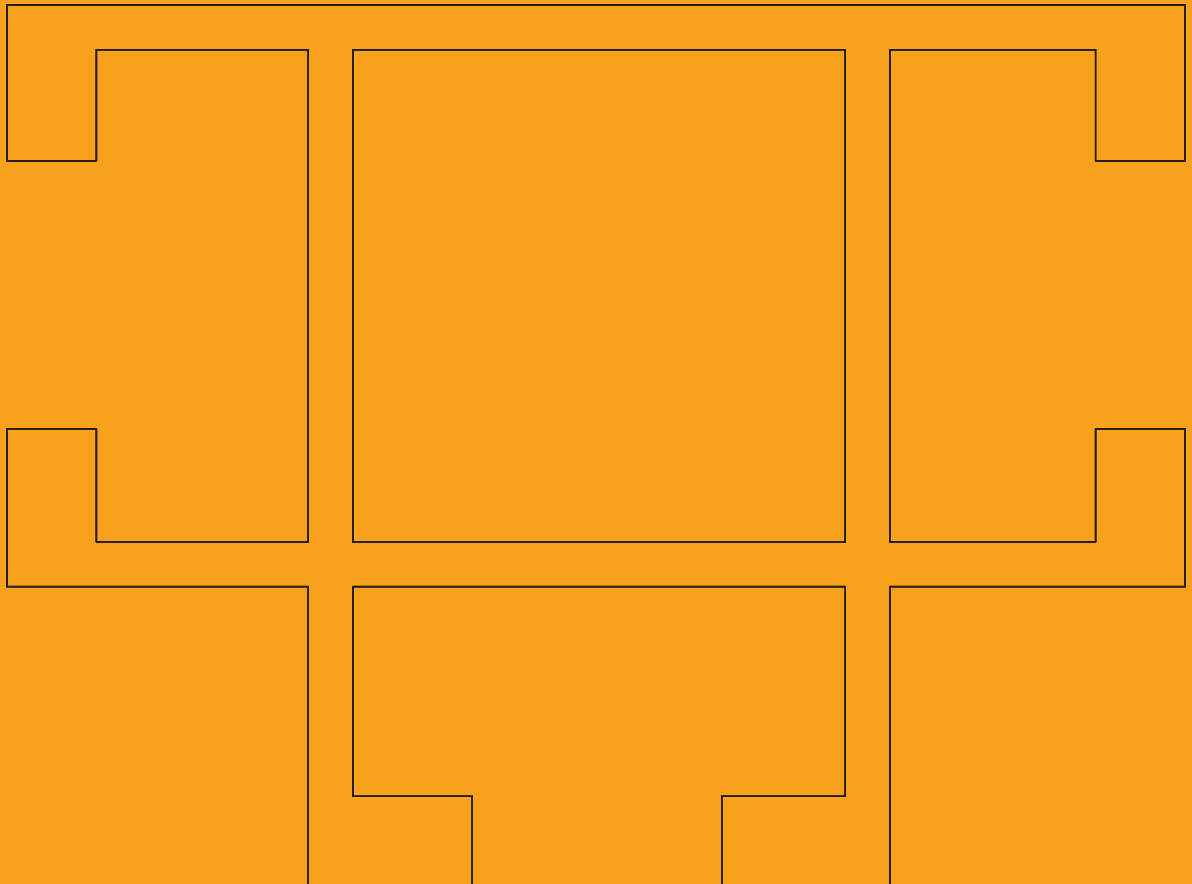


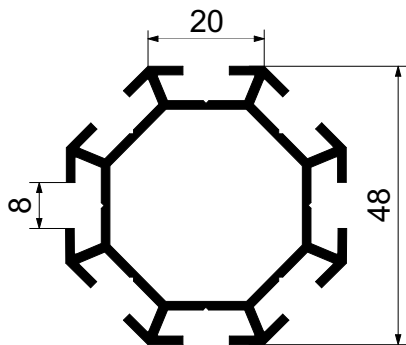
# SYSTEM STANDARD 8 MM





**profil A6131**

aluminium extrusion A6131



Waga: 0,9 kg/mb  
Długość: 5010 mm  
Materiał: EN-AW 6060,  
aluminium satynowane,  
anodowane  
Kolor: naturalny  
lub wg RAL

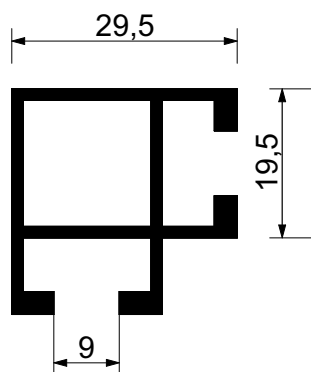
Weight: 0,9 kg/m  
Length: 5010 mm  
Material: EN-AW 6060,  
aluminium satin,  
anodised  
Color: natural  
or RAL palette

03.001



**profil A4857**

aluminium extrusion A4857



Waga: 0,53 kg/mb  
Długość: 5010 mm  
Materiał: EN-AW 6060,  
aluminium satynowane,  
anodowane  
Kolor: naturalny  
lub wg RAL

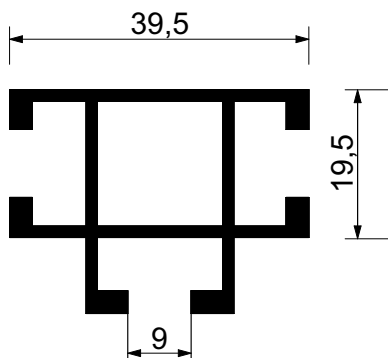
Weight: 0,53 kg/m  
Length: 5010 mm  
Material: EN-AW 6060,  
aluminium satin,  
anodised  
Color: natural  
or RAL palette

03.002



**profil A4856**

aluminium extrusion A4856



Waga: 0,72 kg/mb  
Długość: 5010 mm  
Materiał: EN-AW 6060,  
aluminium satynowane,  
anodowane  
Kolor: naturalny  
lub wg RAL

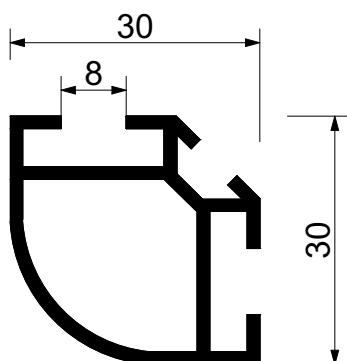
Weight: 0,72 kg/m  
Length: 5010 mm  
Material: EN-AW 6060,  
aluminium satin,  
anodised  
Color: natural  
or RAL palette

03.003



**profil A6036**

aluminium extrusion A6036



Waga: 0,60 kg/mb  
Długość: 6010 mm  
Materiał: EN-AW 6060,  
aluminium satynowane,  
anodowane  
Kolor: naturalny  
lub wg RAL

Weight: 0,60 kg/m  
Length: 6010 mm  
Material: EN-AW 6060,  
aluminium satin,  
anodised  
Color: natural  
or RAL palette

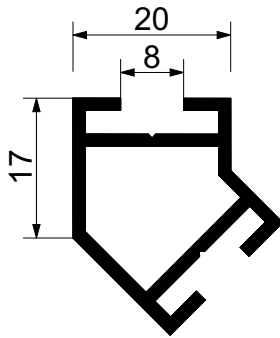
03.004



### profil A6128

aluminium extrusion A6128

03.005



Waga: 0,43 kg/mb  
 Długość: 5010 mm  
 Materiał: EN-AW 6060,  
 aluminium satynowane,  
 anodowane  
 Kolor: naturalny  
 lub wg RAL

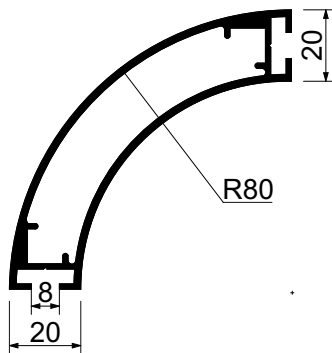
Weight: 0,43 kg/m  
 Length: 5010 mm  
 Material: EN-AW 6060,  
 aluminium satin,  
 anodised  
 Color: natural  
 or RAL palette



### profil 6134

aluminium extrusion A6134

03.006



Waga: 1,55 kg/mb  
 Długość: 6010 mm  
 Materiał: EN-AW 6060,  
 aluminium satynowane,  
 anodowane  
 Kolor: naturalny  
 lub wg RAL

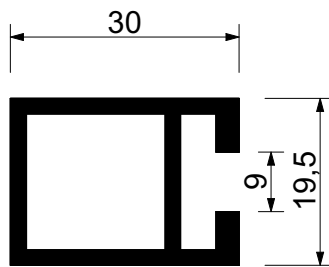
Weight: 1,55 kg/m  
 Length: 6010 mm  
 Material: EN-AW 6060,  
 aluminium satin,  
 anodised  
 Color: natural  
 or RAL palette



### profil B 5151

aluminium extrusion B5151

03.007



Waga: 0,43 kg/mb  
 Długość: 6010 mm  
 Materiał: EN-AW 6060,  
 aluminium satynowane,  
 anodowane  
 Kolor: naturalny  
 lub wg RAL

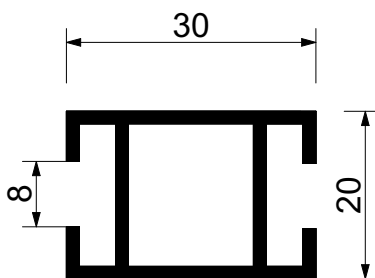
Weight: 0,43 kg/m  
 Length: 6010 mm  
 Material: EN-AW 6060,  
 aluminium satin,  
 anodised  
 Color: natural  
 or RAL palette



### profil A6037

aluminium extrusion A6037

03.008



Waga: 0,45 kg/mb  
 Długość: 6010 mm  
 Materiał: EN-AW 6060,  
 aluminium satynowane,  
 anodowane  
 Kolor: naturalny  
 lub wg RAL

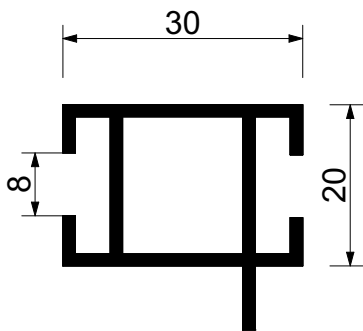
Weight: 0,45 kg/m  
 Length: 6010 mm  
 Material: EN-AW 6060,  
 aluminium satin,  
 anodised  
 Color: natural  
 or RAL palette



**profil A6132**

aluminium extrusion A6132

03.009



Waga: 0,50 kg/mb  
 Długość: 6010 mm  
 Materiał: EN-AW 6060,  
 aluminium satynowane,  
 anodowane  
 Kolor: naturalny  
 lub wg RAL

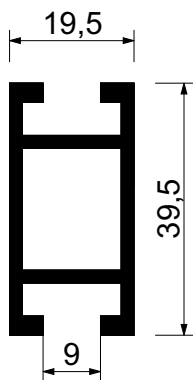
Weight: 0,50 kg/m  
 Length: 6010 mm  
 Material: EN-AW 6060,  
 aluminium satin,  
 anodised  
 Color: natural  
 or RAL palette



**profil A4858**

aluminium extrusion A4858

03.010



Waga: 0,58 kg/mb  
 Długość: 6010 mm  
 Materiał: EN-AW 6060,  
 aluminium satynowane,  
 anodowane  
 Kolor: naturalny  
 lub wg RAL

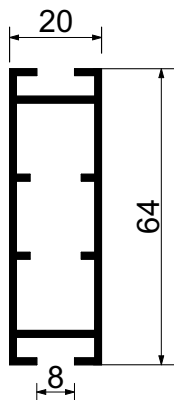
Weight: 0,58 kg/m  
 Length: 6010 mm  
 Material: EN-AW 6060,  
 aluminium satin,  
 anodised  
 Color: natural  
 or RAL palette



**profil A6038**

aluminium extrusion A6038

03.011



Waga: 0,80 kg/mb  
 Długość: 6010 mm  
 Materiał: EN-AW 6060,  
 aluminium satynowane,  
 anodowane  
 Kolor: naturalny  
 lub wg RA

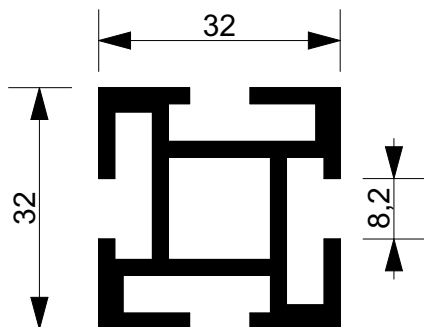
Weight: 0,80 kg/m  
 Length: 6010 mm  
 Material: EN-AW 6060,  
 aluminium satin,  
 anodised  
 Color: natural  
 or RAL palette



**profil A4855**

aluminium extrusion A4855

03.012



Waga: 0,50 kg/mb  
 Długość: 5010 mm  
 Materiał: EN-AW 6060,  
 aluminium satynowane,  
 anodowane  
 Kolor: naturalny  
 lub wg RAL

Weight: 0,50 kg/m  
 Length: 5010 mm  
 Material: EN-AW 6060,  
 aluminium satin,  
 anodised  
 Color: natural  
 or RAL palette







# **AKCESORIA DO SYSTEMU STANDARD 8 MM**

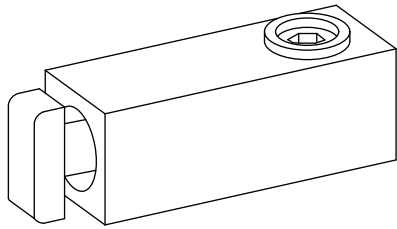
SYSTEM 8 MM ACCESSORIES





**zamek**

lock



Materiał: obudowa ZnAl  
 Zamek 14x14 - Waga: 0,045 kg  
 Zamek 16x16 - Waga: 0,052 kg  
 Zamek 17x15 - Waga: 0,055 kg

Materiał: ZnAl  
 Lock 14x14 - Weight: 0,045 kg  
 Lock 16x16 - Weight: 0,052 kg  
 Lock 17x15 - Weight: 0,055 kg

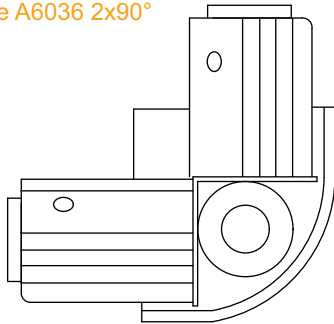


03.101

**głowica do profilu**

**A6036 2x90°**

corner joint for  
 profile A6036 2x90°



Materiał: tworzywo sztuczne  
 Kolor: popiel, biały, czarny  
 Waga: 0,028 kg

Materiał: plastic  
 Color: grey, white, black  
 Weight: 0,028 kg

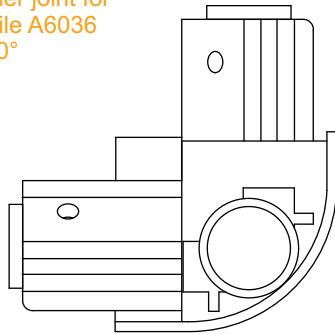


03.102

**głowica do profilu**

**A6036 3x90°**

corner joint for  
 profile A6036  
 3x90°



Materiał: tworzywo sztuczne  
 Kolor: popiel, biały, czarny  
 Waga: 0,038 kg

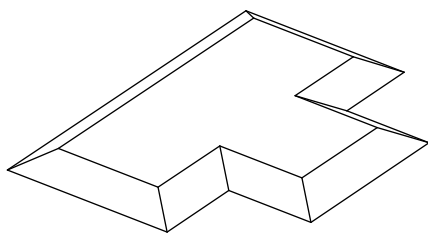
Materiał: plastic  
 Color: grey, white, black  
 Weight: 0,038 kg



03.103

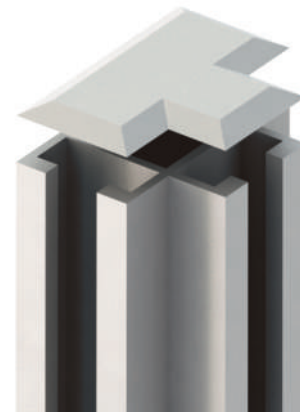
**zaślepka do  
 profilu A4856**

end cap A4856



Materiał: tworzywo sztuczne  
 Kolor: popiel, biały, czarny  
 Waga: 0,001 kg

Materiał: plastic  
 Color: grey, white, black  
 Weight: 0,001 kg



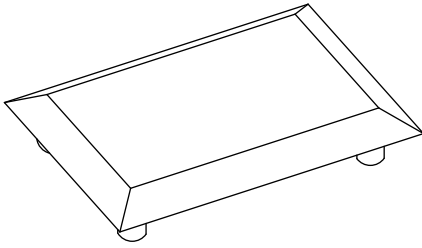
03.104

zaślepka do  
profilu B5151  
end cap B5151

03.105

Materiał: tworzywo sztuczne  
Kolor: popiel, biały, czarny  
Waga: 0,001 kg

Material: plastic  
Color: grey, white, black  
Weight: 0,001 kg

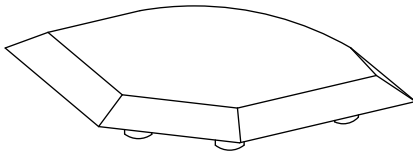


zaślepka do  
profilu A6036  
end cap A6036

03.106

Materiał: tworzywo sztuczne  
Kolor: popiel, biały, czarny  
Waga: 0,001 kg

Material: plastic  
Color: grey, white, black  
Weight: 0,001 kg

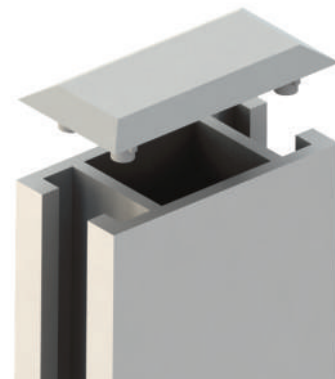
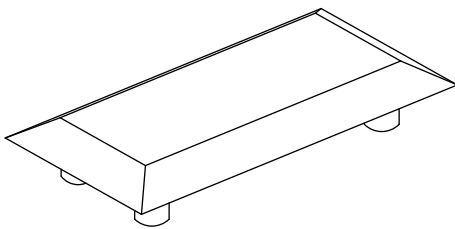


zaślepka do  
profilu A6037  
end cap A6037

03.107

Materiał: tworzywo sztuczne  
Kolor: popiel, biały, czarny  
Waga: 0,001 kg

Material: plastic  
Color: grey, white, black  
Weight: 0,001 kg

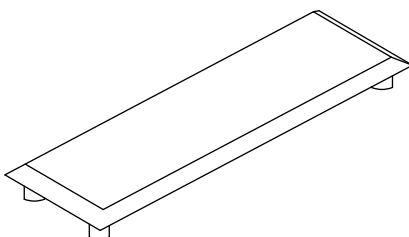


zaślepka do  
profilu A6038  
end cap A6038

03.108

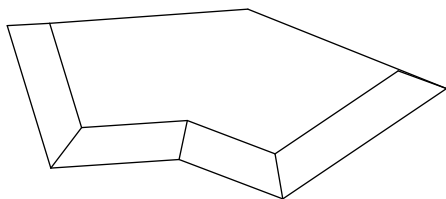
Materiał: tworzywo sztuczne  
Kolor: popiel, biały, czarny  
Waga: 0,001 kg

Material: plastic  
Color: grey, white, black  
Weight: 0,001 kg



zaślepka do  
profilu A6128  
end cap A6038

03.109



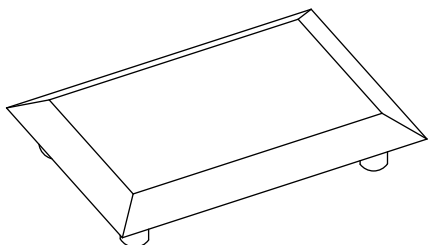
Materiał: tworzywo sztuczne  
Kolor: popiel, biały, czarny  
Waga: 0,001 kg

Material: plastic  
Color: grey, white, black  
Weight: 0,001 kg



zaślepka do  
profilu A6132  
end cap A6132

03.110



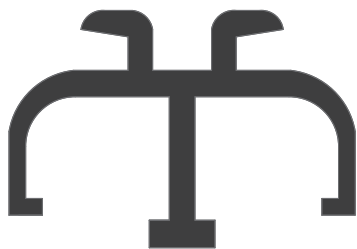
Materiał: tworzywo sztuczne  
Kolor: popiel, biały, czarny  
Waga: 0,001 kg

Material: plastic  
Color: grey, white, black  
Weight: 0,001 kg



przewodnica do szyb  
track for sliding door

03.111



Materiał: tworzywo sztuczne  
Kolor: popiel, biały, czarny  
Waga: 0,015 kg/m  
dolna, górna  
L - 3000 mm

Material: plastic  
Color: grey, white, black  
Weight: 0,015 kg/m  
lower, upper  
L - 3000 mm



uszczelka przyszybowa  
glass seal

03.112



Materiał: tworzywo sztuczne  
Waga: 0,089 kg L - 10mb

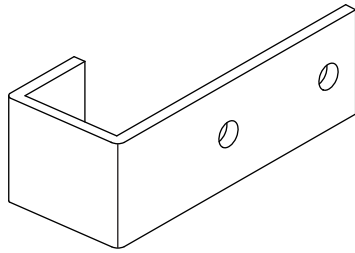
Material: plastic  
Weight: 0,089 kg L - 10mb



### zawieszka fryzu

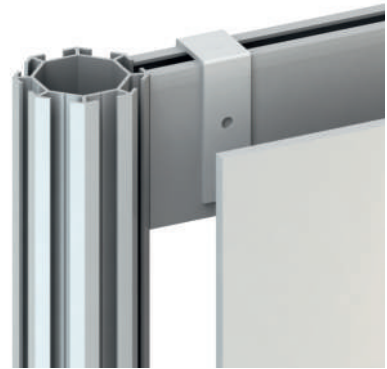
head hanger

03.113



Material: stal ocynkowana  
Waga: 0,026 kg  
Profil: 20mm

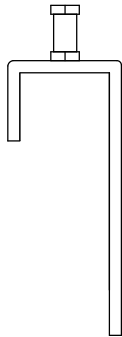
Material: zink coated steel  
Weight: 0,026 kg



### zawieszka fryzu regulowana

head hanger adjustable

03.114



Material: stal ocynkowana  
Waga: 0,03 kg  
Profil: 20mm

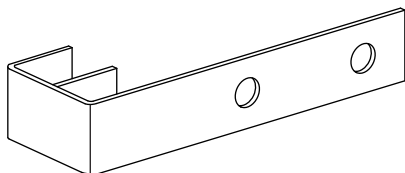
Material: zink coated steel  
Waga: 0,03 kg



### zawieszka fryzu odstawiona

head hanger moved

03.115



Material: stal ocynkowana  
Waga: 0,052 kg  
Profil: 20mm

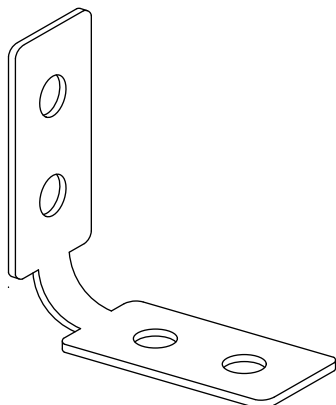
Material: zink coated steel  
Weght: 0,052 kg



### kątownik podłogowy

floor angle

01.148



Material: stal ocynkowa  
Waga: 0,026 kg

Material: zink coated steel  
Weight: 0,026 kg

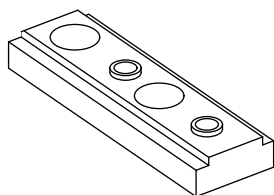


**tabletki oporowa**

blade

Material: ZnAl  
Waga: 0,015 kg

Material: ZnAl  
Weight: 0,015 kg



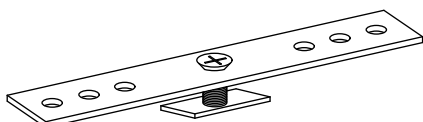
03.116

**blaszka do mocowania  
płyty L-100 prosta**

panel fastening blade straight

Material: stal ocynkowana  
Waga: 0,030 kg

Material: zink coated steel  
Weight: 0,030 kg



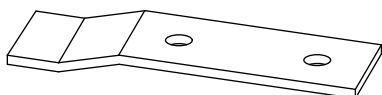
01.145

**blaszka mocująca  
płyte gięta**

panel fastening blade (bent)

Material: stal ocynkowana  
Waga: 0,015 kg

Material: zink coated steel  
Weight: 0,015 kg



01.146

**zetka 5 mm**

panel retainer

Material: stal ocynkowana  
Waga: 0,014 kg

Material: zink coated steel  
Weight: 0,014 kg



01.154

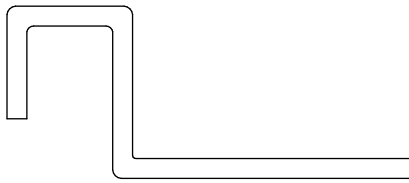
### zetka 10 mm

panel retainer 10 mm

01.154.2

Material: stal ocynkowana  
Waga: 0,015 kg

Material: zink coated steel  
Weight: 0,015 kg



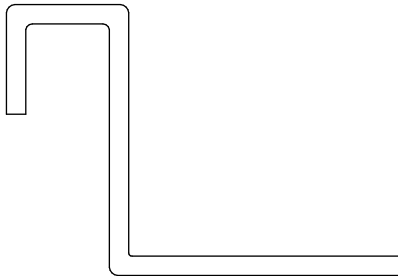
### zetka 18 mm

panel retainer 18 mm

01.154.5

Material: stal ocynkowana  
Waga: 0,017 kg

Material: zink coated steel  
Weight: 0,017 kg



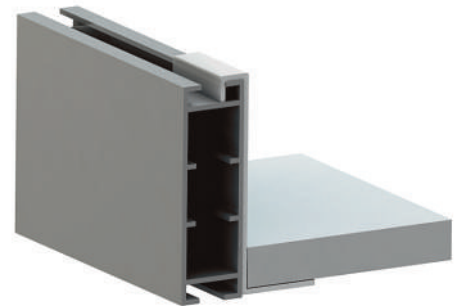
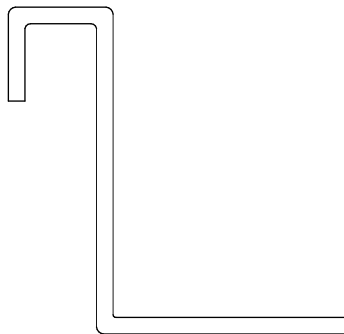
### zetka 64 mm

panel retainer 64 mm

03.117

Material: stal ocynkowana  
Waga: 0,017 kg

Material: zink coated steel  
Weight: 0,017 kg



### podpora półki prosta

simple shelf bracket

03.118

Material: aluminium anodowane  
Kolor: naturalny lub wg RAL  
Długość: 200-400 mm  
Waga: L 200 - 0,086 kg  
L 400 - 0,172 kg

Material: aluminium anodised  
Color: natural or RAL palette  
Length: 200-400 mm  
Weight: L 200 - 0,086 kg  
L 400 - 0,172 kg

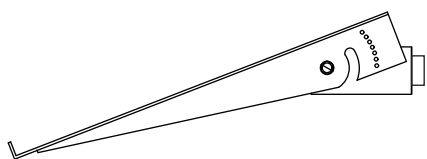


**podpora półki**  
**regulowana prawa**  
 adjustable right shelf bracket

03.119.1

Material: aluminium,  
 Kolor: wg RAL  
 Waga: 0,204 kg

Material: aluminium,  
 Color: RAL palette  
 Weight: 0,204 kg

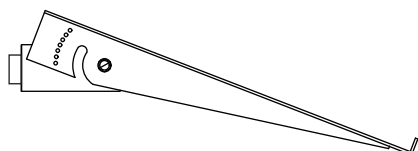


**podpora półki**  
**regulowana lewa**  
 adjustable left shelf bracket

03.119.2

Material: aluminium,  
 Kolor: wg RAL  
 Waga: 0,204 kg

Material: aluminium,  
 Color: RAL palette  
 Weight: 0,204 kg

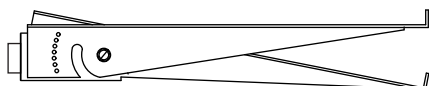


**podpora półki**  
**regulowana podwójna**  
 adjustable left shelf bracket

03.120

Material: aluminium  
 Kolor: wg RAL  
 Waga: 0,266 kg

Material: aluminium  
 Color: RAL palette  
 Weight: 0,266 kg

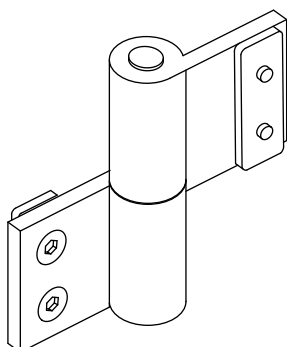


**zawias prawy**  
 right hinge

01.171

Material: aluminium anodowane  
 Waga: 0,081 kg  
 Wymiar: 100x35, 80x35

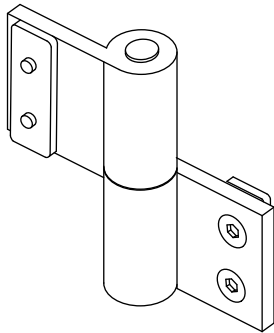
Material: aluminium anodised  
 Weight: 0,081 kg  
 Measurements: 100x35, 80x35



## zawias lewy

left hinge

01.172



Material: aluminium anodowane  
Waga: 0,081 kg  
Wymiar: 100x35, 80x35

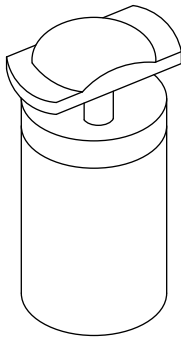
Material: aluminium anodised  
Weight: 0,081 kg  
Measurements: 100x35, 80x35



## bolec podporowy

support bolt

03.121



Material: stal ocynkowana  
Waga: 0,017 kg

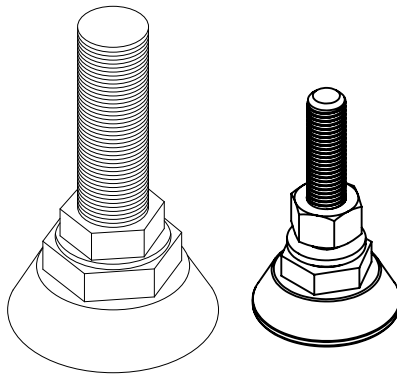
Material: zink coated steel  
Weight: 0,017 kg



## stopka do profili

adjustable foot

03.122



Material: stal ocynkowana  
Waga: 0,032 kg

Material: zink coated steel  
Weight: 0,032 kg



## klucz imbus

adjustable foot

03.123

